

Montour County's Voting System

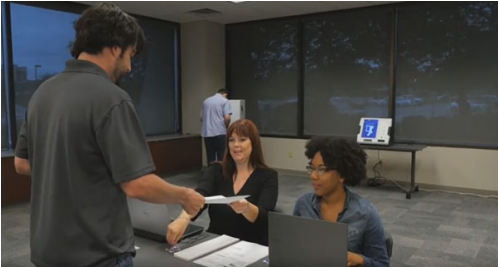
Welcome to the Montour voting system page. This page tells you how to vote in person on Election Day in Montour.

Most voters in Montour will vote using a hand-marked paper ballot. Some voters will use the **ES&S ExpressVote 2.1** to mark their ballot. All voters will use the **DS 200 Precinct Scanner** to cast their completed ballot.

If you have questions about voting in Montour, contact the county election office 570-271-3000. If you have any questions at the polling place on election day, poll workers are there to help you. Poll workers are trained to maintain the secrecy of your ballot.

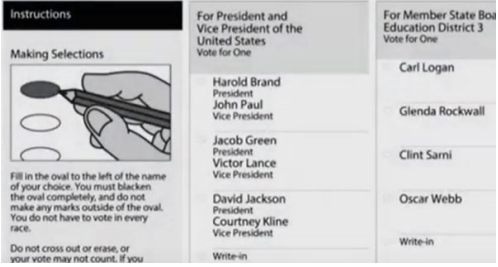
How to Vote Using a Hand-Marked Paper Ballot

1. Getting started



- After you check in, a poll worker will hand you a ballot.
- Take your ballot to a ballot marking station, which is a table with a privacy screen or a booth.

2. Make your selections



- Completely fill the oval next to each of your selections on the ballot.
- Complete the front and back of all pages of the ballot.

3. Review your selections



- Check that you have voted all the contests you want to vote and confirm your selections.
- Check the maximum number of candidates you are allowed to select for each office.
 - Do not select more than the maximum number of candidates for each office.
 - However, you may select fewer than the maximum number of candidates.
- If you need to change a selection after you mark the ballot, ask a poll worker for a new ballot.
 - Do not scan the ballot you want to change.
 - Do not try to correct the ballot. Instead, give your spoiled ballot to the poll worker and make your selections again on the new ballot.

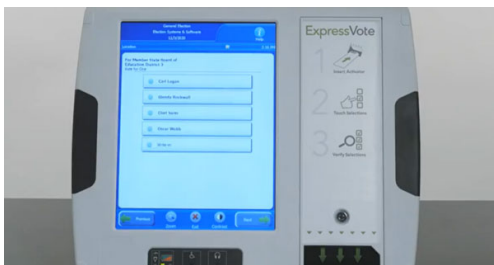
4. Submit your ballot



- Take your completed ballot to the ballot scanner and insert it into the scanner.
 - A poll worker may be nearby to help you.
- If you see a message saying the ballot was NOT successfully cast, you may need to review your ballot again.
 - If you do not understand the message on the screen, ask for help from a poll worker right away.
- Your ballot is cast when you see a confirmation screen on the scanner.

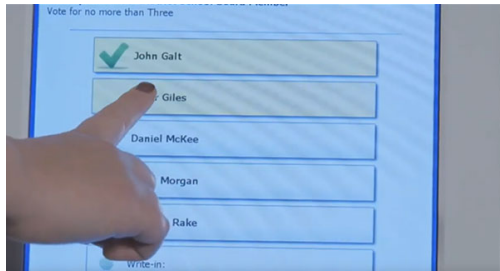
How to Vote Using the Ballot Marking Device

1. Getting started



- After you check in, a poll worker will direct you to a voting station and set you up with a ballot marking device.

2. Make your selections



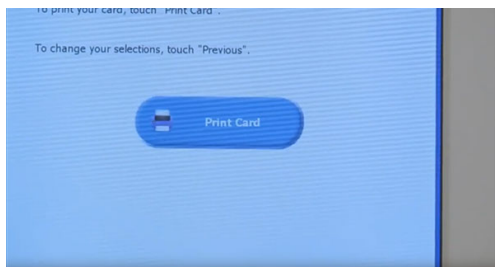
- Make your selections by touching the screen.
- Use the PREVIOUS and NEXT buttons to switch between contests on the ballot.

3. Review your selections



- Review your selections on the summary screen.
- Check that you have voted all the contests you want to vote and confirm your selections.
- Check the maximum number of candidates you are allowed to select for each office.
 - You may select fewer than the maximum number of candidates.
- To make a change, touch the contest and change your selection.

4. Print your ballot



- If you are satisfied with your selections, touch PRINT CARD to print your ballot.
- Confirm your selections on the printed ballot.
- If you need to make a change after the ballot has been printed, you will need to get help from a poll worker before you scan your ballot.

5. Submit your ballot



- Take your printed ballot to the ballot scanner and insert it into the scanner.
 - A poll worker may be nearby to help you.
- If you see a message saying the ballot was NOT successfully cast, you may need to review your ballot again.
 - If you do not understand the message on the screen, ask for help from a poll worker right away.
- Your ballot is cast when you see a confirmation screen on the scanner.

Accessible Devices and Features

Devices

The following devices are available to use with the ballot marking device:

- Tactile keypad
 - Has buttons of different shapes
 - Labeled in braille.
- Headphone jack
 - located on the ballot marking device.
- Dual switch jack
 - Compatible with two-position rocker switches and sip and puff devices.

Ask for help from a poll worker to set up the assistive devices you intend to use.

Features

The ExpressVote ballot marking device has the following accessible settings. You can access these features at the bottom of the screen while voting, by selecting the help icon at the top of the screen or using the tactile keypad.

- Contrast – changes the screen to high contrast white text on black background.
- Zoom – Changes the size of the words on the screen.
- Audio speed – Changes the speed at which the ballot is read when using headphones.
- Audio volume – Changes the volume when using headphones.
- Display – Makes the screen blank for privacy while the audio is in use.

Instructional Videos

DS200 - <https://www.youtube.com/watch?v=VwHNMH9oCe4>

ExpressVote - <https://www.youtube.com/watch?v=IchPY48BLwE>

Helpful Links

- Montour County Elections Office Website
<http://www.montourco.org/Pages/ElectionsAndVoterRegistration.aspx>

Other Counties

Pennsylvania counties using this voting system and configuration:

- Adams County
- Allegheny County
- Beaver County
- Blair County
- Butler County
- Cambria County
- Centre County
- Chester County
- Clearfield County
- Franklin County
- Huntingdon County
- Indiana County
- Juniata County
- Lackawanna County
- Lawrence County
- Lehigh County
- Mercer County
- Mifflin County
- Montour County
- Schuylkill County
- Snyder County
- Somerset County
- Tioga County
- Venango County